

## UNFPA Response to the Syrian Humanitarian Crisis in Lebanon January - April 2013



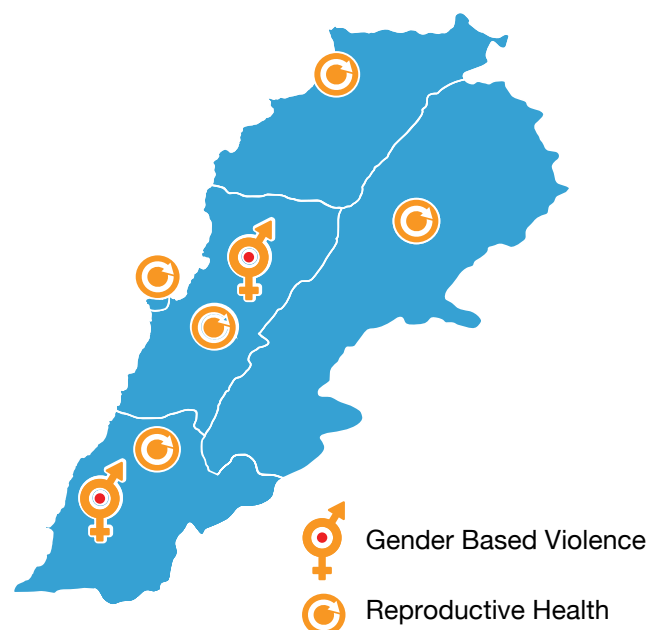
### SITUATION OVERVIEW

Estimates calculated based on UNHCR data as of April 30, 2013

# 453,000 refugees

### MAP OF UNFPA'S MAIN INTERVENTIONS

For more details: <http://goo.gl/maps/hgNkD>



● Spread across 1,200 villages

○ 343,000 registered

82,000 households






78 % women and children

UNFPA's humanitarian response covers displaced Syrians, displaced Palestinians, and Lebanese communities as many refugees are living with host families in the poorest areas of the country.

Gender Based Violence  
 Reproductive Health

United Nations Population Fund: Delivering a world where every pregnancy is wanted, every childbirth is safe, and every young person's potential is fulfilled.

## BUDGET

Donor	US \$	Activities
United Nations Central Emergency Response Fund 	102,533	<ul style="list-style-type: none"> <li>Reproductive health kits</li> <li>Reproductive health pharmaceuticals</li> <li>Logistical support and distribution of commodities</li> <li>Awareness raising to women/girls in host communities</li> <li>Monitoring support</li> </ul>
US Department of State / Bureau of Population, Refugees and Migration 	500,000	<ul style="list-style-type: none"> <li>Women / girls dignity kits</li> <li>Training social workers on mental health, psychological support and parenting techniques</li> <li>Training school teachers on behavioural management</li> <li>Focus group discussion with girls/women on stress, gender based violence, anxiety, depression or family-related such problems</li> <li>Behavioral interventions for mothers and children</li> <li>Awareness raising and public lectures</li> <li>Informative material and flyers</li> <li>Referral services for women / family members to specific gender-based violence interventions</li> <li>Treatment for severe mental distress</li> <li>Monitoring support</li> </ul>
Government of Germany 	140,000	<ul style="list-style-type: none"> <li>Support women safe spaces and women support groups</li> <li>Training of social workers on psycho-social/mental health</li> <li>Dignity kits/ sanitary pads for women and girls</li> <li>Production of GBV informative, relevant and culturally sensitive material</li> </ul>
UNFPA Programme funds 	250,000	<ul style="list-style-type: none"> <li>Reproductive health and gender based violence assessment</li> <li>Youth needs assessment</li> <li>Training on Minimum Initial Service Package for reproductive health</li> <li>Training on clinical management of rape survivors</li> <li>Rolling out of Standard Operating Procedures on Gender Based Violence</li> <li>Development of informative material</li> <li>Awareness raising on reproductive health and gender based violence</li> <li>Technical assistance</li> </ul>
UNFPA Emergency funds 	175,000	<ul style="list-style-type: none"> <li>Support youth safe spaces</li> <li>Training of trainers on family planning mental health and counselling in reproductive tract infections for young people</li> <li>Training of young people on comprehensive package</li> <li>Awareness raising to young people on reproductive health</li> <li>Training of trainers</li> <li>Information/communication</li> </ul>
<b>TOTAL</b>	<b>1,167,533</b>	

## PARTNERS



United Nations Population Fund: Delivering a world where every pregnancy is wanted, every childbirth is safe, and every young person's potential is fulfilled.

## ASSESSMENTS

### Assessment of Service Delivery Points Offering Reproductive Health Services

#### Situation

UNFPA focuses on improving data availability and analysis around sexual and reproductive health (including family planning) as timely and reliable data is essential for efficient targeting of relief, accountability and for realistic estimation of funding.

#### Response

Assessment of service delivery points (primary health care centers, social development centers and NGOs with health dispensaries) offering reproductive health (RH) services for displaced Syrians conducted in order identify existing needs and explore ways to fill those critical gaps.

#### Reach

7 service delivery points in North, South, Bekaa and Beirut assessed.

## REPRODUCTIVE HEALTH

### Raising Awareness on Sexual and Reproductive Health and Gender Based Violence

#### Situation

There are no camps in Lebanon and most Syrian refugees have settled in the poorest parts of the country, in districts like Akkar in the North and Baalbek or Hermel in the Bekaa. The North Governorate is home to 40% of Lebanon's poor, with more than half the people living under US\$4 a day. Although 60% of refugees are now renting their own homes, still their presence in more than 1000 villages across the country has depleted government-provided supplies in pharmacies, increased competition for jobs, raised the price of housing, and, in some cases, more than doubled the population of the town or village. Assisting poor Lebanese hosts is key in defusing tensions building between refugees and host communities.

#### Response

Raising awareness of women and girls from host communities on antenatal care (including nutrition), post natal care, family planning, reproductive tract infections and sexually transmitted infections, and Gender Based Violence prevention. In addition, sanitary pads are distributed to women attending the session.

#### Reach

30 social workers trained  
722 women and girls from hosting communities reached  
1,664 packs of sanitary pads distributed

#### Feedback

*I used to think that violence against women is normal in married life, but now because of this session I feel more aware about it and about its consequences. I am also much more aware of my rights!* - **Participant, Bekaa**

## Equipping Service Delivery Points with Reproductive Health Kits and Supplies Including Contraceptives

### Situation

UNFPA needs assessment (July- August 2012) showed that while 37% of non-pregnant married women were using contraceptives, reasons for not using any was attributed to high cost, distance, quantity, and unavailability of preferred type of contraceptive. High rates of menstrual irregularity (54%) and pain (44%) and sexually transmitted infections (33%) were also identified.

### Response

The Inter-Agency Emergency Reproductive Health (RH) Kits are essential drugs, equipment and supplies assembled into a set of specially designed pre-packaged kits. A total of 13 types of RH kits are readily available to be purchased, shipped and distributed in conflict and humanitarian situations. UNFPA provides RH kits based on thorough needs assessment.

### Reach

- 69 RH kits distributed
- 35 health service delivery points equipped with various RH kits
- 13 geographical areas covered
- 63,960 male condoms distributed
- 6,375 women recipients of oral and injectable contraception
- 4,250 adult recipients of treatment of sexually transmitted infections
- 1,080 women recipients of intrauterine devices
- Clinical delivery assistance for 135 deliveries provided
- Miscarriage treatments for 10 women provided
- Suture of tears (cervical and vaginal) and vaginal examination for 90 women provided
- Post-rape kits for possible treatment of 300 adults and 60 children provided

### Impact

All 12 Ministry of Social Affairs’ Social Development Centres listed on the Refugee Health Info Note supplied with sufficient contraceptive methods and sexually transmitted infections treatment kits.

### Feedback

*These kits were really needed, especially in remote areas like ours. Now that we have sufficient quantities and that distribution is free, women are visiting us on a monthly basis for their regular supply of oral contraception – Head of centre, Bekaa*

## GENDER BASED VIOLENCE

### Training Social Workers on Parenting Strategies

#### Situation

Burden of displacement generates intensive stress that can lead to increased violence within the family. UNFPA needs assessment (July- August 2012) showed that 74% of Syrian women admitted beating their children more than usual. Psychosocial support and equipping women with coping mechanisms can be one of the best ways to ensure the security and well-being of families and entire communities.

#### Response

Providing psychological support for Syrian women and children aimed at enabling mothers to deal with their children's behavior in the context of displacement.

#### Reach

- 2 training manuals developed
- 8 social workers trained
- 5 Social Development Centres (Ministry of Social Affairs) engaged
- 5 geographical areas covered

#### Feedback

*The training was really technical and efficient; it was immediately directed to my work in the field – Social worker, Saida*

---

Next Situation Report: July 2013 (Covering May – June 2013)

For further information, please contact:

Asma Kurdahi  
Assistant Representative  
UNFPA Lebanon  
kurdahi@unfpa.org

Zein NAHAS  
Media and Communication Associate  
UNFPA Lebanon  
nahas@unfpa.org

UNFPA, United Nations Population Fund - Lebanon  
Address: Arab African International Building, Banks Street, Beirut  
Phone: + 961 1 962 580, + 961 70 111 652  
Fax: + 961 1 962 581  
Website: [www.unfpa.org.lb](http://www.unfpa.org.lb)

United Nations Population Fund: Delivering a world where every pregnancy is wanted, every childbirth is safe, and every young person's potential is fulfilled.

